



# THE GREEN TEAM

## Idling Reduction Signs and Materials Application

THE GREEN TEAM  
320 Riverside Drive 1-A  
Northampton, MA 01062  
(413) 586-7350 ext. 225 Phone  
(413) 586-7351 Fax

E-mail: [recycle@thegreenteam.org](mailto:recycle@thegreenteam.org)

[www.thegreenteam.org](http://www.thegreenteam.org)

Please complete the form, have it signed by your principal and submit it by mail or fax. The requested materials will be shipped directly to your school at the address you specify below. (Delivery cannot be made to a P.O. Box). Please print clearly or type.

Name of Receiver \_\_\_\_\_ Title \_\_\_\_\_

School Name \_\_\_\_\_

Address \_\_\_\_\_ City/Town \_\_\_\_\_ Zip \_\_\_\_\_

Telephone \_\_\_\_\_ Fax \_\_\_\_\_

E-mail Address: \_\_\_\_\_

### Idling Reduction Signs

These signs are designed for posting in school driveways and parking lots to remind bus drivers and parents not to idle unnecessarily. All signs are 0.08 gauge aluminum, engineering grade reflective sheeting, 18" high by 12" wide with two holes for mounting on a post, wall or fence. Post not included.



**A**

Lettering is white with a circular image of one gray vehicle on a white background and a red "no" symbol.

Quantity \_\_\_\_\_



**B**

Lettering is white with a square image of three white vehicles on a gray background and a red "no" symbol.

Quantity \_\_\_\_\_



**C**

Lettering and images are black on a white background.

Quantity \_\_\_\_\_

#### THE GREEN TEAM Idling Reduction Pledge

In our classroom we are learning about the benefits of clean air and actions that we can take to improve air quality. One way you can ensure cleaner air in our community and around our school is to turn off your vehicle's engine when waiting to pick up your child or running errands.

Please sign and return the pledge below to let your child know that you are joining with other parents in our school's GREEN TEAM effort to improve air quality and help everyone breathe easier. By reducing idling you will:

- Protect students, school staff and drivers from harmful exhaust fumes
- Reduce air pollutants that contribute to smog and global warming
- Reduce fuel consumption
- Reduce engine wear and tear
- Save money on fuel and engine repairs

Brought to you by the Massachusetts Department of Environmental Protection

#### IDLING REDUCTION PLEDGE

I, \_\_\_\_\_ hereby pledge to my child, \_\_\_\_\_

Parent/Guardian's Name Student's Name

that I will IMPROVE AND PROTECT AIR QUALITY in our community by turning off my vehicle's engine when I am parked or waiting.

Signed by \_\_\_\_\_ Date \_\_\_\_\_

Parent/Guardian's Signature

Witnessed by \_\_\_\_\_ Date \_\_\_\_\_

Student's Signature

Printed on 100% post consumer recycled paper with vegetable based ink.

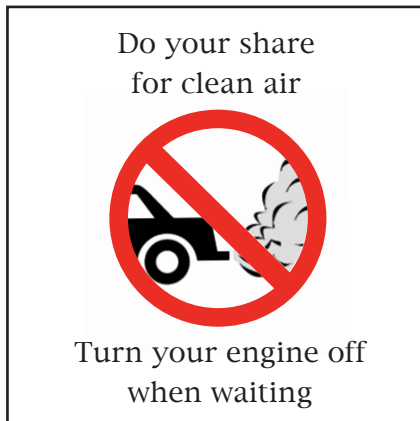
### Idling Reduction Pledge Cards

Packaged in sets of 50, pledge cards are available for classes participating in the Idling Reduction Pledge Activity. Printed on recycled paper.

Quantity: \_\_\_\_\_



# THE GREEN TEAM Idling Reduction Signs and Materials Application



## Static Sticker Windshield Decals

These 3" x 3" decals can be distributed to drivers and affixed to the windshield as a reminder not to idle. The decal should be placed in the lower left corner of the windshield so as not to obscure visibility. The decal adheres without adhesives and is removable. Consider providing these to students who return signed Idling Reduction Pledges.

Quantity: \_\_\_\_\_



## Bumper Stickers

For display on cars, buses and municipal vehicles. Consider providing these to students who return signed Idling Reduction Pledges. 3"x12".

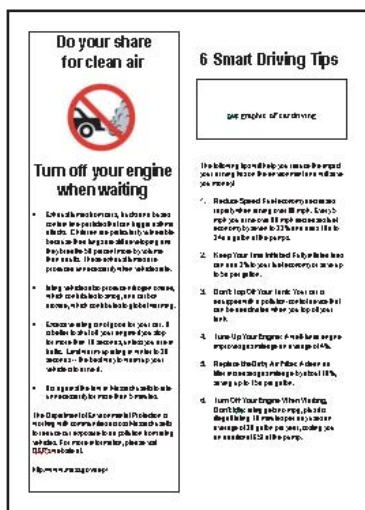
Quantity: \_\_\_\_\_



## School Bus Dashboard Stickers

This 4"x 8" removable sticker can be displayed on a school bus driver's dashboard to remind the driver and educate students about clean air initiatives.

Quantity: \_\_\_\_\_



## Palm Cards

These informational cards can be distributed in classes and at public events at school and in the community. 3.5" x 8.5".

Quantity: \_\_\_\_\_



## THE GREEN TEAM Idling Reduction Signs and Materials Application

### Please answer the following questions:

1. Is your school a member of The Green Team? Yes\_\_\_\_ No\_\_\_\_
2. Is this a new Idling Reduction program for your school? Yes\_\_\_\_ No\_\_\_\_
3. Is there a specific date that you need the materials by? \_\_\_\_\_
4. Please describe how you intend to use the requested materials: \_\_\_\_\_  
\_\_\_\_\_  
\_\_\_\_\_

Signature of Principal \_\_\_\_\_

Signature of Applicant \_\_\_\_\_ Applicant's Title/Position \_\_\_\_\_

### Submit application form by mail or fax to:

**THE GREEN TEAM**  
320 Riverside Drive 1-A  
Northampton, MA 01062  
(413) 586-7351 Fax

THE GREEN TEAM is sponsored by:



The Massachusetts Executive  
Office of Environmental Affairs  
and Department of Environmental Protection